

LASER SENTINEL™

your sentinel for safe area protection



Laser Sentinel Master/Slave

Safety Laser Scanner Type 3,
PL d, SIL 2

Safety Zone up to 5.5 m
2 Warning Zones up to 40 m

Measurement data available
with 0.1° angular resolution for
master and 0.5° for slaves.

Display with colour-based
Intrusion Detection System

Configurable outputs for general
fault or "clean window" alarm

8 pins or 12 pins connector for
standard cabling



275° Opening Angle

40/70 mm detection capability
Selectable by Graphic User Interface

Muting and Override functions
available

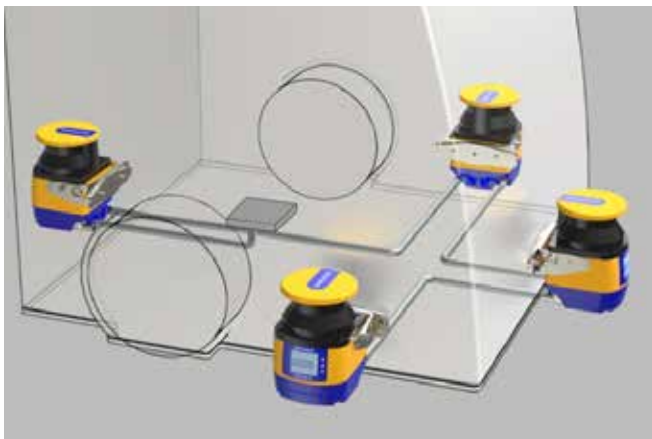
Up to 10 zone safe set switching
automatically synchronized
between master and slaves

Master-slave connection includes
seamless safe communication
and power transmission

Ethernet port on Master for
programming and monitoring of
whole system by a single point

SLS-M (Master) and up to three SLS-R (Slave) can be connected without need of additional external unit to form a consistent safety system that share safety and warning zones over all devices.

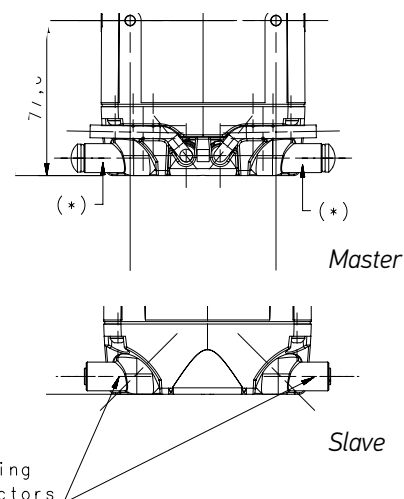
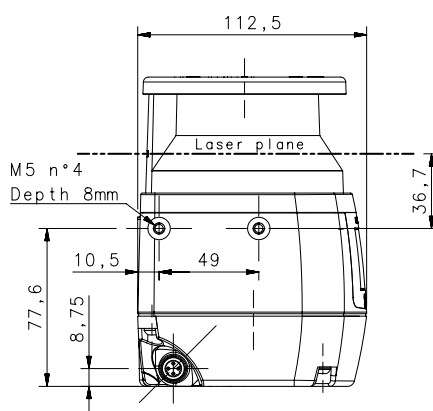
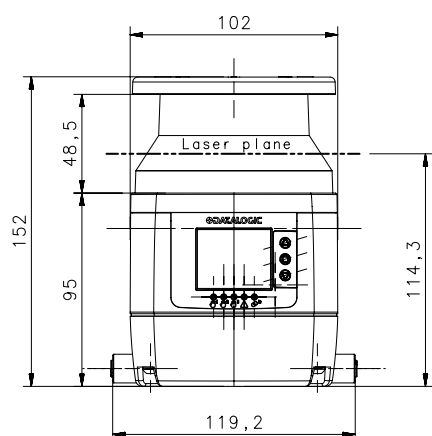
Available functions make it possible to protect static horizontal or vertical applications, as well as moving applications.



TECHNICAL DATA MASTER/ SLAVE MODEL (SLS-M/R)

General data	Type (EN61496-1)	3
	PL (EN ISO 13849-1)	d
	SIL (IEC 61508)	2
Detection data	Detection capability	40 / 70 mm selectable
	Angular resolution	0.1°
	Safety zone operating range	0.05 ... 5.5 m
	Warning zone max operating range	0.05 ... 40 m
	Max. number of symultaneous warning zones	2
	Max. opening angle	275°
Electrical data	Response time (Configurable)	Min: 62 ms; Max: 482 ms
	Power supply (Vdd)	24 Vdc ± 20%
	Safety Outputs (OSSDs)	2
	Output current	0.25 A max / each OSSD
	Capacitive load	2.2 uF @ 24Vdc max
	Configurable Inputs	8-pin: 2; 12-pin:1
Mechanical and environmental data	Configurable Inputs/Outputs	8-pin: 1; 12-pin:4
	Operating temperature	0 ...+50 °C
	Storage temperature	-20 ... 70°C
	Humidity	15 ... 95 % (no condensation)
	Mechanical protection	IP 65 (EN 60529)
Functions	Manual / automatic restart	
	Dynamic switching between zone sets :	
	10 with 1 safety zone;	
	6 with 1 safety zone and 1 warning zone;	
	3 with 1 safety zone and 2 warning zones.	
	Warning area intrusion detection	
	Total Muting (T or L)	
	Reference Points	
	Override	
	Muting Lamp	
Measuring Data, with 0.1° angular resolution for Master and 0.5° resoluzione for Slaves		
"Clean Window" alarm		

DIMENSIONS



I/O CONNECTOR

CONNECTOR (M12, 8-POLE)	
	SIGNAL
POWER	2 POWER SUPPLY
	7 GND_ISO
INPUT	3 MULTI IN
	4 MULTI IN
INPUT/OUTPUT	1 MULTI IN/OUT
SAFETY OUTPUTS	5 OSSD11
	6 OSSD12
OTHER	8 F_EARTH

CONNECTOR (M12, 12-POLE)	
	SIGNAL
POWER	1 POWER SUPPLY
	4 POWER SUPPLY
	2 GND_ISO
	6 GND_ISO
INPUT	3 MULTI IN
	7 MULTI IN/OUT
INPUT/OUTPUT	9 MULTI IN/OUT
	10 MULTI IN/OUT
	11 MULTI IN/OUT
SAFETY OUTPUTS	8 OSSD11
	5 OSSD12
OTHER	12 F_EARTH

COLOR INTRUSION DETECTION SYSTEM

